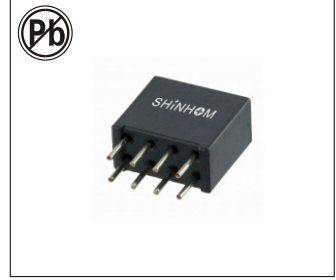


SMD POWER BEAD SMB4B SERIES



FEATURES:

- Small size, high current, high performance.
- Low DCR, excellent EMI suppression capability.
- Suitable for surface mounting equipment.

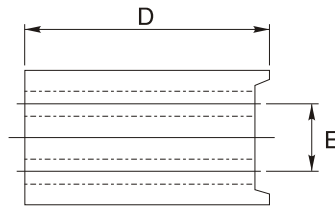
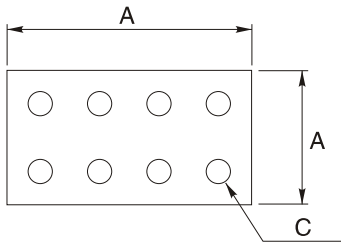
COMMON APPLICATIONS:

- VTR, digital set-top box, LCD Monitor
- DC/DC converters, xDSL
- Wireless communication equipment

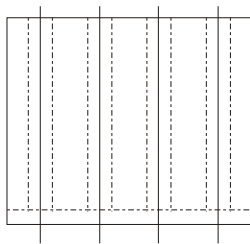
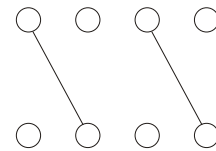
ELECTRICAL CHARACTERISTICS: 25°C

Part Number	Impedance 25MHz (Min)	Impedance 100MHz (Min)
SMB4B1155-141	140	255
SMB4B1111H-201	200	240
SMB4B1111H-2T-451	450	550
SMB4B1111H-3T-801	800	850
SMB4B1111L-121	125	210
SMB4B1111L-2T-281	280	450
SMB4B1111L-3T-551	550	800

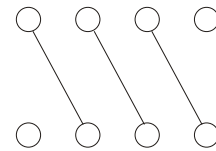
PHYSICAL CHARACTERISTICS & TYPE



TYPE: SMB4B-2T



TYPE: SMB4B-3T



Part No.	A	B	C	D	E
SMB4B1155	11 ± 0.3	5.5 ± 0.25	0.65REF	10.5 ± 0.3	2.54REF
SMB4B1111H	11 ± 0.15	11 ± 0.2	0.7REF	10.5 ± 0.3	2.54REF
SMB4B1111L	11 ± 0.15	11 ± 0.2	0.7REF	6.5 ± 0.3	2.54REF

Note:

1. The parameters of list are typical, atypical parameters can be customized according to customer's requirements.
2. Operating temperature: -40°C to 105°C